

XS-80H RCS is a program for remote control of the Roland XS-82H, XS-83H, and XS-84H ("XS series units"). XS-80H RCS uses an intuitive graphical user interface (GUI), and makes it possible to use XS series units with greater convenience. * The program runs on both Windows and Macintosh computers.

XS-80H RCS

Owner's Manual Version 1.2 and later

XS-80H RCS is compatible with version 3.0 and after of the XS series system program. Use the XS series unit with its system program updated to the latest version.

Contents

| | |
|-------------------------------------------------------|----|
| Introduction | 2 |
| About XS-80H RCS | 2 |
| System Requirements | 2 |
| Installing/Uninstalling XS-80H RCS | 3 |
| Connection Using a LAN | 4 |
| Connection Using RS-232C | 5 |
| Starting/Quitting XS-80H RCS | 6 |
| Part Names and Functions | 8 |
| Saving Setting Values to the Computer As a File | 14 |
| Saving/Recalling Presets | 15 |

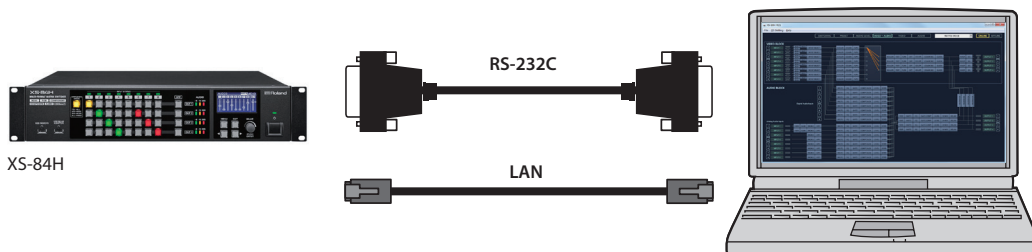
Introduction

About XS-80H RCS

XS-80H RCS is a program for remotely operating an XS series unit connected to a computer over a LAN or via RS-232C.

From XS-80H RCS, you can perform panel operations and make menu settings on the XS series unit. You can also save the settings of the connected XS series unit to the computer as a file>(*1) and save settings created in XS-80H RCS to the XS series unit.

Performing operations in XS-80H RCS is possible even when no connection is made to an XS series unit (offline).(*2) This means that at times such as during prior planning for system design, you can create settings using only XS-80H RCS and save the created settings to an on-site XS series unit later.



(*1) Only current setting values are saved in the file. Presets are not saved.

(*2) Items that can be manipulated while offline are limited.

System Requirements

| | | |
|---------------------------|--------------------------------------------------------------------------------------|------------------------------------------------------------------------------------------------------------------------------------------------|
| Operating System | Windows | Windows 7 Service Pack 1 or later |
| | Mac | OS X 10.9 or later |
| CPU | Windows | Intel Core 2 Duo or higher, or compatible processor * No assurance is made regarding the compatibility of compatible processors themselves. |
| | Mac | Intel Processor |
| RAM | 2 GB or more | |
| Required Disk Space | 100 MB or more | |
| Display Resolution/Colors | 1280 x 720 resolution or higher Full Color (24-bit) or higher | |
| Other Matters | Connection to an XS series unit requires a network environment or RS-232C interface. | |

* XS-80H RCS is compatible with version 3.0 and after of the XS series system program. Use the XS series unit with its system program updated to the latest version.

* Operation of XS-80H RCS on a standard computer that satisfies the conditions just described has been confirmed, but all operation under these conditions is not assured. Please be aware that even under identical conditions, computer-specific differences in design specifications or usage environment might result in differences in processing capacity.

Installing/Uninstalling XS-80H RCS

XS-80H RCS is available for download from the Roland website (<http://proav.roland.com/>).

Installing and Setting Up

Windows

1. Right-click the downloaded compressed file, then click "Expand All!"

The setup program (Roland_XS-80HRCS_Installer.exe) is expanded.

2. Double-click "Roland_XS-80HRCS_Installer.exe" to run it.

3. Follow the instructions in the setup program to install.

* If a User Account Control prompt appears, click [OK].

Mac

1. Double-click the downloaded compressed file.

The disk-image file (Roland_XS-80H_RCS(.dmg)) is expanded.

* Depending on your computing setup, the file might be expanded automatically when downloaded.

2. Double-click "Roland_XS-80H_RCS(.dmg)."

The "XS-80H RCS" disk is mounted.

3. Drag the "XS-80HRCS.app" icon from the mounted disk to your application folder.

4. Unmount the "XS-80H RCS" disk.

Uninstalling

Windows

1. Working in sequence, click the [Start] button → [Control Panel].

2. When Control Panel appears, click [Uninstall a program] or [Programs and features].

3. When the Programs and Features screen appears, go to the program list and double-click [Roland XS-80H RCS].

4. Follow the on-screen instructions to uninstall XS-80H RCS.

* If a User Account Control prompt appears, click [Continue].

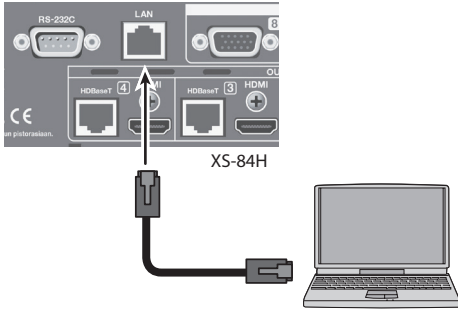
Mac

1. Drag the XS-80HRCS icon from the application folder to the Trash.

Connection Using a LAN

Direct Connection Using the LAN Port

1. Using a LAN cable, connect the LAN port on the XS series unit and the computer.



| | |
|-------------|----------|
| Port | LAN port |
| Protocol | TCP |
| Port number | 8023 |

2. Turn on the power to the XS series unit.
3. On the XS series unit, select [MENU] → “LAN,” then make the settings as follows.

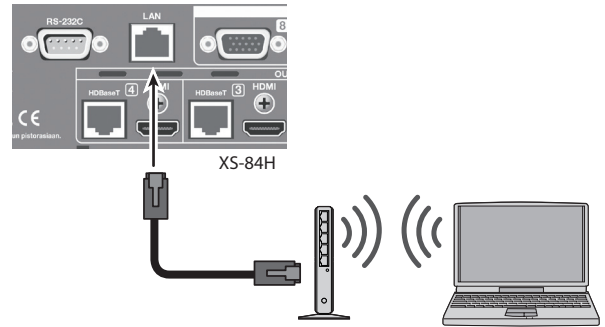
| Menu item | Setting |
|-------------|----------------------------------------------------------------------------------|
| CONFIGURE | MANUALLY (manual settings) |
| IP ADDRESS | This sets the IP address. Set this in accordance with the connected network. |
| SUBNET MASK | This sets the subnet mask. Set this in accordance with the connected network. |

4. Start the computer.
5. Follow the procedure in “Making the Network Settings on the Computer” (p. 5) to change the settings for the network.

Connecting Via a Wi-Fi Router

You connect the XS series unit and a Wi-Fi router using a LAN cable, and make a wireless connection to the computer via the Wi-Fi router.

1. Using a LAN cable, connect the LAN port on the XS series unit to the Wi-Fi router.



2. Turn on the power to the XS series unit.
3. Make the connection between the XS series unit and the Wi-Fi router.

On the XS series unit, select [MENU] → “LAN,” then make the following settings.

| Menu item | Setting |
|-------------|---------------------------------------------------------------------------------------------------------------------------|
| CONFIGURE | This specifies whether the IP address and subnet mask are acquired automatically (USING DHCP) or set manually (MANUALLY). |
| IP ADDRESS | This sets the IP address when “CONFIGURE” is set to “MANUALLY.” Set this in accordance with the connected network. |
| SUBNET MASK | This sets the subnet mask when “CONFIGURE” is set to “MANUALLY.” Set this in accordance with the connected network. |

4. Make the connection between the computer and the Wi-Fi router.

For more information on how to make connections, refer to the respective documentation for the computer and the Wi-Fi router you’re using.

MEMO

If you set “CONFIGURE” to “MANUALLY” in step 3, network settings must be made on the computer. For details, refer to “Making the Network Settings on the Computer” (p. 5).

Making the Network Settings on the Computer

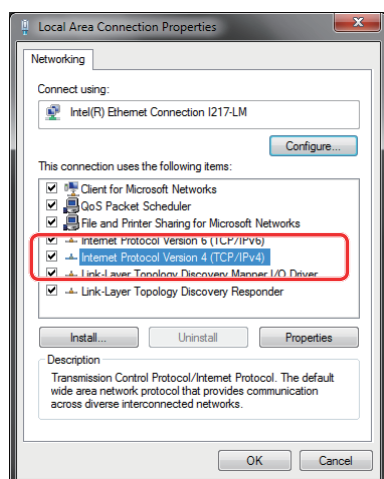
When the IP address and subnet mask are set manually on the XS series unit as shown below, the network settings must be made on the computer.

[MENU] button → “LAN” Settings

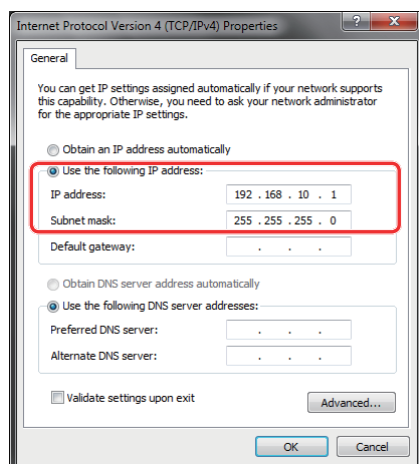
| Menu item | Setting |
|-------------|----------------------------------------------------------------------------------|
| CONFIGURE | MANUALLY (manual settings) |
| IP ADDRESS | This sets the IP address. Set this in accordance with the connected network. |
| SUBNET MASK | This sets the subnet mask. Set this in accordance with the connected network. |

Windows

1. Select the [Start] button → [Control Panel] → [View network status and tasks] → [Change adapter settings].
2. Right-click the network connection you're using, then click Properties.
3. Select “Internet Protocol Version 4 (TCP/IPv4)” and click Properties.



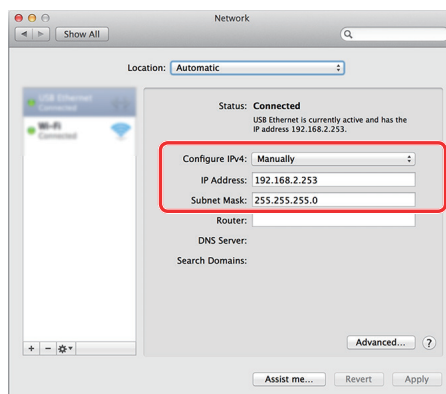
4. Select [Use the following IP address], set the values for the IP address and subnet mask, then click the [OK] button.



| Setting item | Setting |
|--------------|----------------------------------------------------------------------------------------------------------------------------------------------------------------------|
| IP address | Set a numerical value that does not conflict with the IP address of any other device connected to the network. Set this in accordance with the connected network. |
| Subnet mask | This sets the subnet mask. Set this in accordance with the connected network. |

Mac

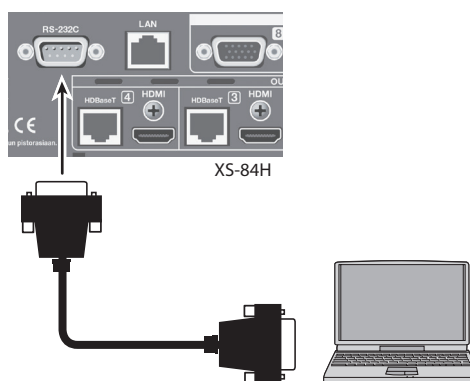
1. Display the Apple menu → “System Preferences” → “Network.”
2. From the list on the left, select the network connection service you're using.
3. Set the values for the parameters shown below, then click the [Apply] button.



| Setting item | Setting |
|--------------|----------------------------------------------------------------------------------------------------------------------------------------------------------------------|
| IPv4 setting | Entered manually |
| IP address | Set a numerical value that does not conflict with the IP address of any other device connected to the network. Set this in accordance with the connected network. |
| Subnet mask | This sets the subnet mask. Set this in accordance with the connected network. |

Connection Using RS-232C

1. Using an RS-232C cable, connect the RS-232C connector on the XS series unit to the computer.



| | |
|----------------------|-----------------------------------------|
| Communication method | Synchronous (asynchronous), full-duplex |
| Communication speed | 9600 bps / 38400 bps |
| Parity | none |
| Data length | 8 bit |
| Stop bit | 1 bit |
| Code set | ASCII |
| Flow control | XON/XOFF |

2. Turn on the power to the XS series unit.
3. Start the computer.

Starting/Quitting XS-80H RCS

Starting

1. Windows

On the computer, go to the “Start” menu and select “All Programs” → “Roland XS-80H RCS” → “XS-80H RCS.”

XS-80H RCS starts and the XS-80H RCS window appears.

Mac

Double-click the XS-80HRCS(.app) icon.

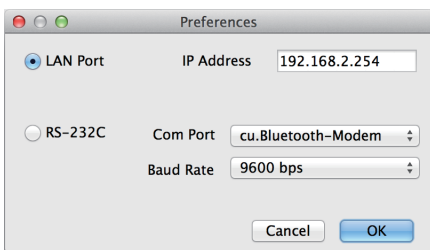
XS-80H RCS starts and the XS-80H RCS window appears.



2. Select the port on the computer where you’re using XS-80H RCS.

Select the “File” menu (Windows)/“XS-80H RCS” menu (Macintosh) → “Preferences” to display the Preferences dialog box.

Select the port, then click the [OK] button.



LAN Port:

Select this when using the LAN port to make the connection.

For IP Address, enter the same numerical value as IP ADDRESS on the XS series unit, under [MENU] → “LAN” → “INFORMATION.”

RS-232C:

Select this when using the RS-232C connector to make the connection.

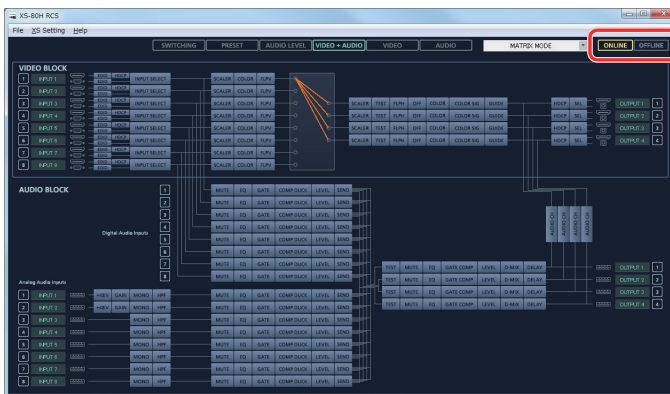
Com Port: From the drop-down list, select the port where the XS series unit is connected.

Baud Rate: This sets the baud rate (bit rate).

3. Click the [ONLINE] button or the [OFFLINE] button.

Click the [ONLINE] button or the [OFFLINE] button to select the operation mode.

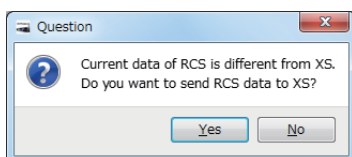
* For details about the operation mode, refer to “About the Operation Mode” (p. 7).



[ONLINE] and [OFFLINE] buttons

If XS-80H RCS and the XS Unit Have Different Settings

If the settings in XS-80H RCS and the settings on the XS series unit are different when the system is switched to online operation, a popup dialog box asking if you want to overwrite the XS-unit settings appears. Click the [Yes] button or the [No] button to select whether to overwrite the settings on the XS series unit.





| | |
|---------------------|---------------------------------------------------------------------------------------------------------|
| [Yes] button | This sends the settings in XS-80H RCS to the XS series unit, overwriting the existing XS-unit settings. |
| [No] button | This loads the current settings on the XS series unit into XS-80H RCS. |

* You can save the values set using XS-80H RCS to the computer as a file (*.rcs) and load the configured state when needed. For details, refer to “Saving Setting Values to the Computer As a File” (p. 14).

About the Operation Mode

XS-80H RCS has two operation modes: "online" and "offline."

| Button | Operation mode | Description |
|-----------------------------------------------------------------------------------|----------------|------------------------------------------------------------------------------------------------------------------------------------------------------------------------------------------------------------------------------------------------------------------|
|  | Online | You select this when performing real-time control of the XS series unit. No operation is possible if the computer and XS series unit are not connected. |
|  | Offline | You select this at times such as during prior planning for system configuration. Operation is possible even if the computer and XS series unit are not connected. * At some screens, such as the PRESET and AUDIO LEVEL screens, no operation is possible. |

NOTE

About Saving Setting Values

- When online, setting values are saved in the XS series unit at the times described below.
 - When exiting a menu by means of an operation on the XS series unit
 - When more than 10 seconds elapses with no operation performed either in XS-80H RCS or on the XS series unit
 - At startup of XS-80H RCS and on sending settings from XS-80H RCS to the XS series unit
 - When the connection to XS-80H RCS is ended
- When offline, all values that have been set are lost when you quit XS-80H RCS. Before quitting XS-80H RCS, save the setting values to the computer.
For more information on operation methods, refer to "Saving Setting Values to the Computer As a File" (p. 14).

MEMO

- XS-80H RCS starts in the same operation mode in use at the last shutdown. Note, however, that when the computer is not connected to an XS series unit, the program starts in the offline mode even if previously shut down in the online mode.

Quitting

1. Windows

Click the "Close" button (the  button) in the XS-80H RCS window.
Alternatively, go to the "File" menu and select "Quit."

XS-80H RCS ends.

Mac

Click the "Close" button (the  button) in the XS-80H RCS window.
Alternatively, go to the "XS-80H RCS" menu and select "Quit XS-80H RCS."

XS-80H RCS ends.

Part Names and Functions

Identical Areas



| No. | Name | Description |
|-----|------------------------|-----------------------------------------------------------------------------------------------------------------------------------------------------------------------------------------------------------------|
| 1 | Menu bar | This displays the menus. For more information about the menus, refer to “Menu Bar” (p. 9). |
| 2 | [SWITCHING] button | This displays the SWITCHING screen (p. 11). You use this to remotely operate the operation panel on the XS series unit. When offline, you can working with this only when in the MATRIX mode. |
| | [PRESET] button | This displays the PRESET screen (p. 11). You use this to save and recall preset values (p. 15). Operation is not possible when offline. |
| | [AUDIO LEVEL] button | This displays the AUDIO LEVEL screen (p. 11). You use this to adjust audio input/output levels. Operation is not possible when offline. |
| | [VIDEO + AUDIO] button | This displays the VIDEO/AUDIO screen (p. 12). You use this to work with the input/output menus on the XS series unit. |
| | [VIDEO] button | This displays the VIDEO screen. This displays the VIDEO BLOCK section (p. 12) of the VIDEO/AUDIO screen independently. You use it to manipulate video-related input/output menu items for the XS series unit. |
| | [AUDIO] button | This displays the AUDIO screen. This displays the AUDIO BLOCK section (p. 12) of the VIDEO/AUDIO screen independently. You use this to manipulate audio-related input/output menu items for the XS series unit. |
| 3 | Output mode | This sets the video output mode. You use the pull-down menu to select the output mode. |
| 4 | [ONLINE] button | This puts XS-80H RCS in the online operation mode (p. 7). |
| | [OFFLINE] button | This puts XS-80H RCS in the offline operation mode (p. 7). |

Menu Bar

- * For more information about dialog-box setting items, in the Reference Manual (PDF) for the XS series unit, refer to “Menu List” (p. 3).
- * To apply dialog-box settings, click the [OK] button in the dialog box.

Windows

| Menu | Description |
|------------------------------------------------|--------------------------------------------------------------------------------------------------------------------------------------------------------------------------------------------------------------------------------------------------------------------------------------------------------------------------------------------------------------------------------------------------------------------------------------------------------------------------------------------------|
| File | New This returns the settings in XS-80H RCS to their default values. * The following dialog-box settings are not returned to their default values. <ul style="list-style-type: none"> • RECALL SAFE dialog box • BEZEL COMPENSATION dialog box • COMMAND dialog box • SYSTEM dialog box * If current settings differ from default values, a popup dialog box appears, allowing you to save the setting values to the computer as a file (*.rcs). |
| | Open This opens a saved file (*.rcs) and loads the settings (p. 14). |
| | Save This saves the current setting values, overwriting the open file (*.rcs) (p. 14). * If the target setting values have never been saved before, a Save XS Data As dialog box for entering a file name is displayed. This saves the setting values in a newly created file (*.rcs) of a different name. |
| | Save As This displays the Save XS Data As dialog box. This saves the setting values in a newly created file (*.rcs) of a different name (p. 14). |
| | Preferences This displays the Preferences dialog box (p. 6). You select the port on the computer where you're using XS-80H RCS. |
| Quit This quits XS-80H RCS (p. 7). | |
| XS Setting | BEZEL COMPENSATION This displays the BEZEL COMPENSATION dialog box. |
| | TRANSITION This displays the TRANSITION dialog box. |
| | OFF SWITCH This displays the OFF SWITCH dialog box. |
| | MULTI This displays the MULTI dialog box. |
| | AUDIO CONTROL This displays the AUDIO CONTROL dialog box. |
| | PANEL OPERATION This displays the PANEL OPERATION dialog box. |
| | COMMAND This displays the COMMAND dialog box. |
| SYSTEM This displays the SYSTEM dialog box. | |
| Help | Help This displays the XS-80H RCS Owner's Manual (this document). |
| | XS-80H Reference Manual This displays the Reference Manual for the XS series unit. |
| | About XS-80H RCS This displays the program version information for XS-80H RCS. |

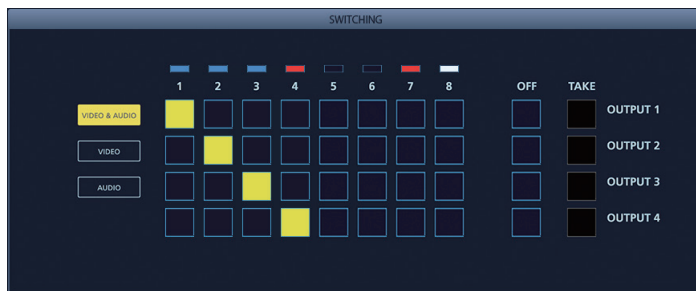
Mac

| Menu | | Description |
|------------|-------------------------|-------------------------------------------------------------------------------------------------------------------------------------------------------------------------------------------------------------------------------------------------------------------------------------------------------------------------------------------------------------------------------------------------------------------------------------------------------------------------------------------------------------|
| XS-80H RCS | About XS-80H RCS | This displays the program version information for XS-80H RCS. |
| | Preferences | This displays the Preferences dialog box (p. 6). You select the port on the computer where you're using XS-80H RCS. |
| | Hide XS-80H RCS | This hides the XS-80H RCS window. |
| | Hide Others | This hides all other application windows except the XS-80H RCS window. |
| | Show All | This displays all application windows. |
| | Quit XS-80H RCS | This quits XS-80H RCS (p. 7). |
| File | New | <p>This returns the settings in XS-80H RCS to their default values.</p> <p>* The following dialog-box settings are not returned to their default values.</p> <ul style="list-style-type: none"> • RECALL SAFE dialog box • BEZEL COMPENSATION dialog box • COMMAND dialog box • SYSTEM dialog box <p>* If current settings differ from default values, a popup dialog box appears, allowing you to save the setting values to the computer as a file (*.rcs).</p> |
| | Open | This opens a saved file (*.rcs) and loads the settings (p. 14). |
| | Save | <p>This saves the current setting values, overwriting the open file (*.rcs) (p. 14).</p> <p>* If the target setting values have never been saved before, a Save XS Data As dialog box for entering a file name is displayed. This saves the setting values in a newly created file (*.rcs) of a different name.</p> |
| | Save As | This displays the Save XS Data As dialog box. This saves the setting values in a newly created file (*.rcs) of a different name (p. 14). |
| XS Setting | BEZEL COMPENSATION | This displays the BEZEL COMPENSATION dialog box. |
| | TRANSITION | This displays the TRANSITION dialog box. |
| | OFF SWITCH | This displays the OFF SWITCH dialog box. |
| | MULTI | This displays the MULTI dialog box. |
| | AUDIO CONTROL | This displays the AUDIO CONTROL dialog box. |
| | PANEL OPERATION | This displays the PANEL OPERATION dialog box. |
| | COMMAND | This displays the COMMAND dialog box. |
| | SYSTEM | This displays the SYSTEM dialog box. |
| Help | XS-80H RCS Help | This displays the XS-80H RCS Owner's Manual (this document). |
| | XS-80H Reference Manual | This displays the Reference Manual for the XS series unit. |

SWITCHING Screen

You display this by clicking the [SWITCHING] button. You use this to remotely operate the operation panel on the XS series unit.

* For information on operation of the XS series unit, refer to the Owner's Manual for the device.



* When offline, you can working with this only when in the MATRIX mode.

PRESET Screen

You display this by clicking the [PRESET] button. You use this to save and recall preset values.

For details, refer to "Saving Presets on an XS Series Unit" (p. 15).

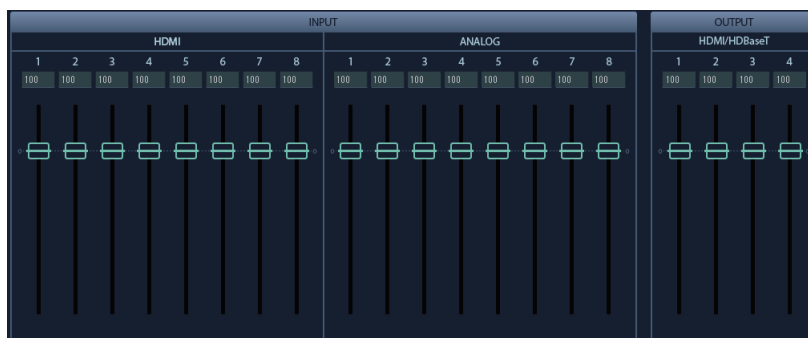


- 1 Lighted in blue: Preset saved.
- 3 Lighted in light blue: Preset currently selected.
- 8 Lighted in white: Command alone saved to the preset.
- 9 Dark: No preset saved.

* Operation is not possible when offline.

AUDIO LEVEL screen

You display this by clicking the [AUDIO LEVEL] button. You use this to adjust the volume levels of audio input and output.

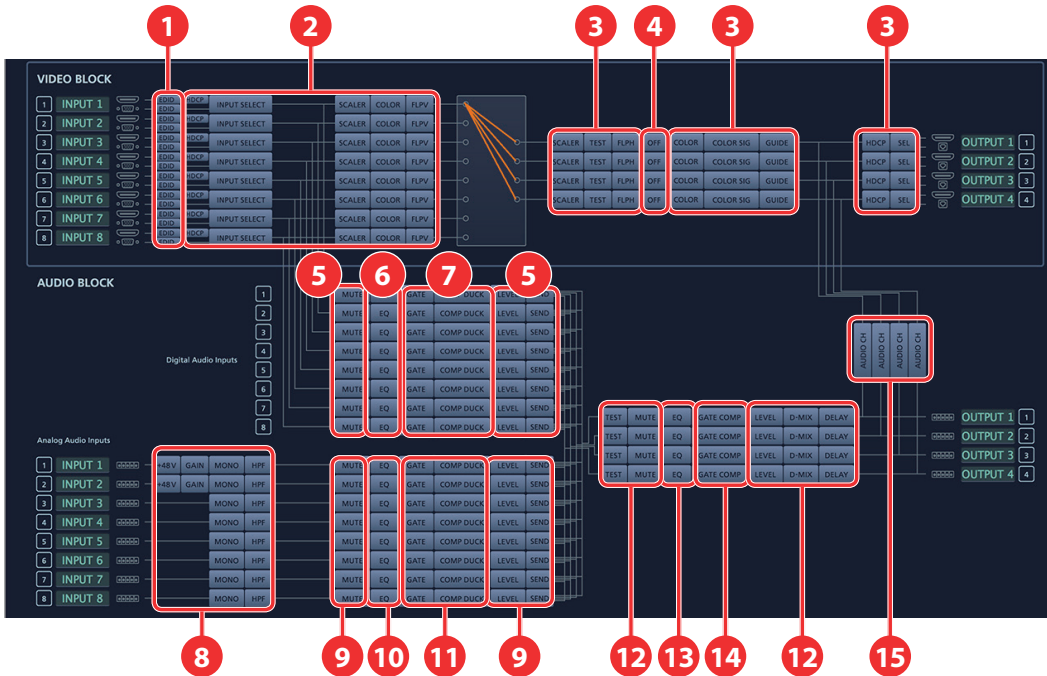


* Operation is not possible when offline.

VIDEO/AUDIO Screen

You display this by clicking the [VIDEO + AUDIO] button. You use this to work with the input/output menus on the XS series unit.

- * For more information about dialog-box setting items, in the Reference Manual (PDF) for the XS series unit, refer to "Menu List" (p. 3).
- * To apply dialog-box settings, click the [OK] button in the dialog box.



Clicking one of the respective areas displays a dialog box. You use the tabs at the top of the dialog box to switch channels.

| No. | Description | No. | Description |
|-----|------------------------------------------------------------|-----|-------------------------------------------------------------|
| 1 | This displays the EDID dialog box. | 9 | This displays the ANALOG AUDIO INPUT LEVEL dialog box. |
| 2 | This displays the VIDEO INPUT dialog box. | 10 | This displays the 4BAND EQUALIZER: ANALOG dialog box. |
| 3 | This displays the VIDEO OUTPUT dialog box. | 11 | AUDIO INPUT GATE / COMPRESSOR / DUCKING: ANALOG dialog box. |
| 4 | This displays the OFF SWITCH dialog box. | 12 | This displays the AUDIO OUTPUT LEVEL dialog box. |
| 5 | This displays the HDMI AUDIO INPUT LEVEL dialog box. | 13 | This displays the 4BAND EQUALIZER: OUTPUT dialog box. |
| 6 | This displays the 4BAND EQUALIZER: HDMI dialog box. | 14 | AUDIO OUTPUT GATE / COMPRESSOR dialog box. |
| 7 | AUDIO INPUT GATE / COMPRESSOR / DUCKING : HDMI dialog box. | 15 | HDMI AUDIO CHANNEL dialog box. |
| 8 | This displays the ANALOG AUDIO INPUT dialog box. | | |

Operations in the 4BAND EQUALIZER Dialog Box



Points on the Graph

Dragging a point changes the “Freq” or “Gain” value.

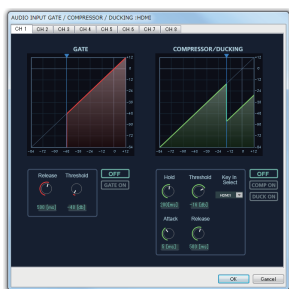
Freq: Drag the point horizontally.

Gain: Drag the point vertically.

[Freq], [Q], and [Gain] Knobs

Move the mouse pointer to the knob you want to operate, then drag vertically or horizontally.

Operations in the AUDIO INPUT GATE / COMPRESSOR / DUCKING Dialog Box



Graph Sliders

Dragging a slider (▼) horizontally changes the “Threshold” value.

[OFF], [COMP ON], and [DUCK ON] Button

These set the compressor or ducking on or off.

You use the [COMP ON] and [DUCK ON] buttons to switch display of the compressor and ducking.

Knobs

Move the mouse pointer to the knob you want to operate, then drag vertically or horizontally.

Operations in the AUDIO OUTPUT GATE / COMPRESSOR Dialog Box



Graph Sliders

Dragging a slider (▼) horizontally changes the “Threshold” value.

[OFF], [GATE ON], and [COMP ON] Button

These set the gate or compressor on or off.

You use the [GATE ON] and [COMP ON] buttons to switch display of the gate and compressor.

Knobs

Move the mouse pointer to the knob you want to operate, then drag vertically or horizontally.

Saving Setting Values to the Computer As a File

You can save the values of settings made using XS-80H RCS to the computer as a file (*.rcs), and load the configured state when needed.

NOTE

- Only current setting values are saved in the file. Presets are not saved.
- Files saved to a USB flash drive from an XS series unit (*.xs8) cannot be loaded into XS-80H RCS.

Saving Settings

Saving by Overwriting

1. From the "File" menu, select "Save."

This saves the current setting values, overwriting the open file (*.rcs).

* If the target setting values have never been saved before, a Save XS Data As dialog box for entering a file name is displayed. This saves the setting values in a newly created file (*.rcs) of a different name.

Saving Using a Name You Specify

1. From the "File" menu, select "Save As."

The Save XS Data As dialog box appears.

2. Specify the destination for saving the file and a file name (*.rcs), then click the [Save] button.

The file is saved to the computer.

Loading Settings

1. From the "File" menu, select "Open."

The Open XS Data dialog box appears.

2. Select the settings file (*.rcs), then click the [Open] button.

The settings are loaded.

Saving/Recalling Presets

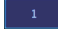


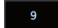
You can save the values of settings made in XS-80H RCS as presets on the XS series unit, and recall presets saved on the XS series unit.

Saving Presets on an XS Series Unit

1. Click the [PRESET] button at the top of the screen to display the PRESET screen.
2. Right-click the button for the preset number where you want to save the settings, then from the menu that appears, select "Save Setting."

The current settings are saved as a preset. The button where the preset is saved lights up in blue.



-  1 Lighted in blue: Preset saved.
-  3 Lighted in light blue: Preset currently selected.
-  8 Lighted in white: Command alone saved to the preset.
-  9 Dark: No preset saved.

MEMO

To Delete a Preset

Right-click the button for the preset number containing the settings you want to delete, then from the menu that appears, select "Delete Setting." The saved data is deleted and the preset button goes dark.

Recalling Presets on an XS Series Unit

1. Click the [PRESET] button at the top of the screen to display the PRESET screen.
2. Click the button for the preset number you want to recall.

The preset is recalled. The button for the currently selected preset number lights up in light blue.

Specifying Setting Values to Recall from a Preset (Recall Safe)

When recalling a preset, you can pre-specify the setting values to call up.

1. Make the setting for Recall Safe.



| | |
|------------------------|----------------------------------------------------------------------------------------------------------------------------------------------------|
| [ON] and [OFF] buttons | These switch the Recall Safe function on and off. When set on, only specified settings are recalled from the preset. |
| [Setting] button | This displays the RECALL SAFE dialog box. You use this to specify whether to recall (OFF) or not recall (ON) the setting for each individual item. |



* Roland is an either registered trademark or trademark of Roland Corporation in the United States and/or other countries.

* Intel and Intel Core 2 Duo are either registered trademarks or trademarks of Intel Corporation.

* Microsoft and Windows are either registered trademarks or trademarks of Microsoft Corporation.

* Apple, Macintosh, Mac OS, the Mac logo are either registered trademarks or trademarks of Apple Inc.